



2011 Athabasca Basin Projects

Krista Reddy
Geologist
2010 MinExplo



AREVA Resources Canada Inc. – 2011 Athabasca Basin Projects



AREVA (formerly COGEMA) and its predecessor companies have been conducting exploration in the Athabasca Basin since 1967.

AREVA welcomes the opportunity to develop new long term working relationships with Northern residents and Northern based contractors.



AREVA Resources Canada Inc. – 2011 Athabasca Basin Projects

AREVA Site Employees	Total Workforce	Northerners
McClellan Lake AREVA	177	48%
McClellan Lake Long Term Contractors	50	66%
Cluff Lake AREVA	9	67%
Cluff Lake Long Term Contractors	11	82%

(As of Aug 31st, 2010)



AREVA Operates Responsibly In All Exploration Activities:

- Environmental Management System - ISO 14001 Certified (Since 2004); Implementing ISO 18001 for Health and Safety
 - Saskatchewan Environment Best Management Practice Guidelines
 - Complies with all applicable legislation
 - AREVA exploration personnel and Contractor’s personnel are trained in EMS Awareness, WHMIS, TDG, First Aid, Fire Response and Spill Response
 - AREVA supports Northern contractors
 - AREVA encourages their contractors to maximize employment of local community members





2010 Exploration Work

► 2010 Included:

East & Central Athabasca

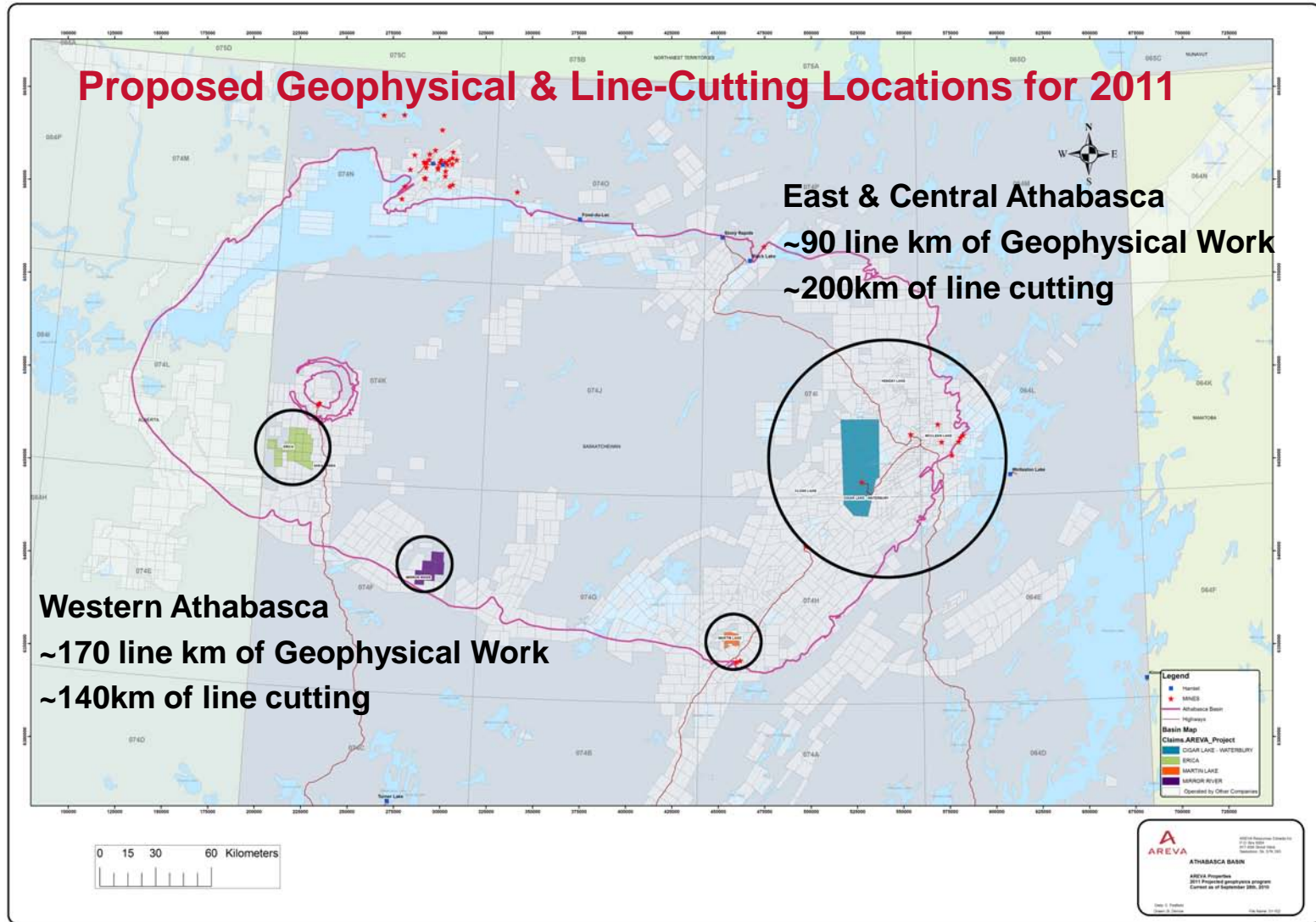
- ~19 000m of Diamond Drilling
- ~130 line km of Geophysical Work
- ~235km of line cutting

Western Athabasca

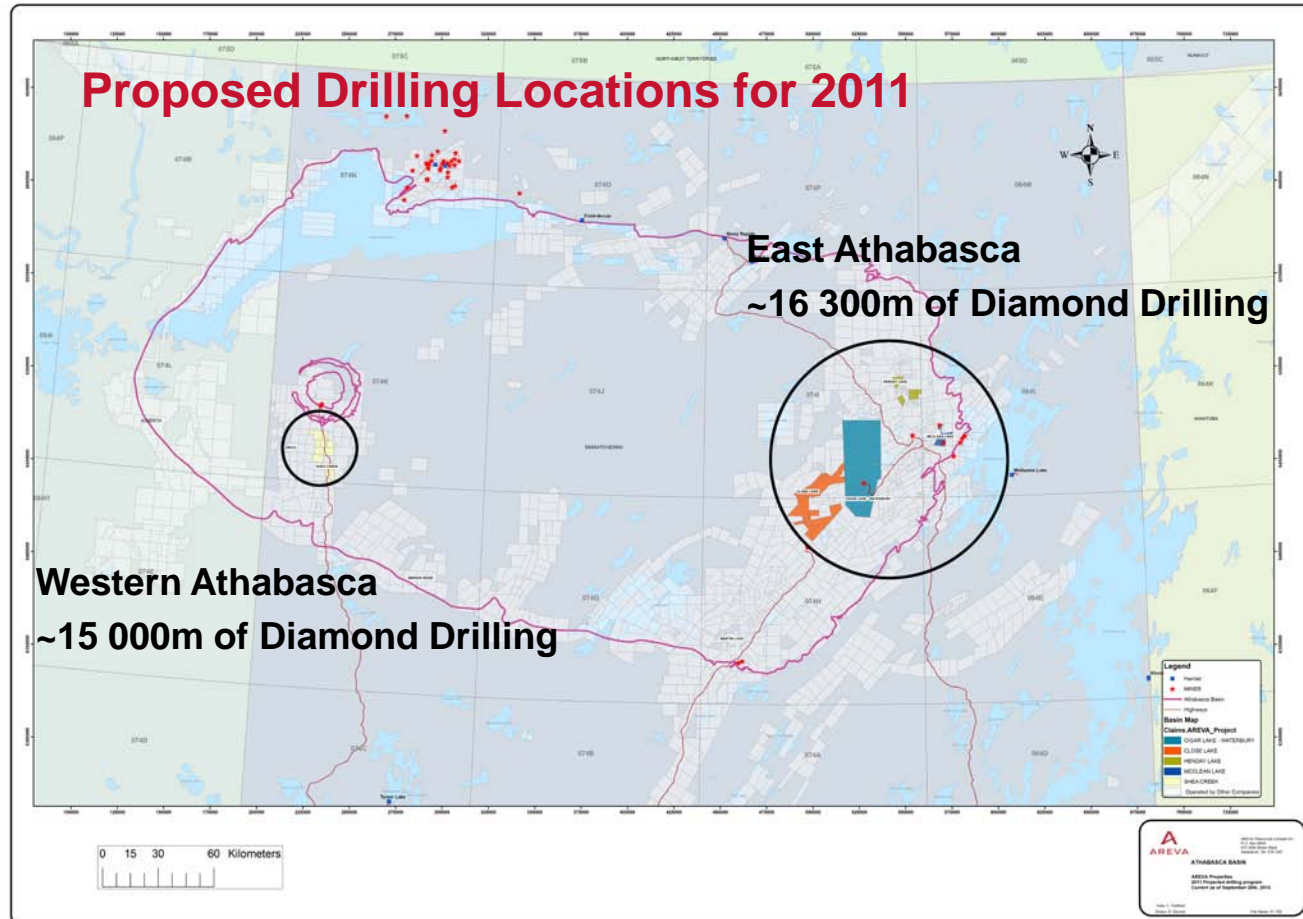
- ~22 500m of Diamond Drilling
- ~50 line km of Geophysical Work
- ~80 km of Line Cutting



AREVA Resources Canada Inc. – 2011 Athabasca Basin Projects



AREVA Resources Canada Inc. – 2011 Athabasca Basin Projects



An example of the Vendor's Qualification Form, AREVA contract tender forms and AREVA contracts can be viewed at the AREVA corporate display. A list of current AREVA exploration contractors and their contact information is also available for individuals seeking employment.

AREVA Resources Canada Inc. – 2011 Athabasca Basin Projects



FOR ALL CONTRACTORS Line-Cutting/Geophysics/Diamond Drilling

AREVA Requirements:

- Must be a Qualified Contractor
- Comply with specifications of the contract
- Personnel must have appropriate training. Most training is financially supported by AREVA
- Ability to establish grid/survey/drill program as designed within constraints of the contract
- Complete work in a timely and efficient manner



AREVA Resources Canada Inc. – 2011 Athabasca Basin Projects

EXPLORATION EMPLOYMENT OPPORTUNITIES



EMPLOYMENT OPPORTUNITIES: Line Cutter, Cook, Camp Personnel, Equipment Helper, Geophysical Operators, Driller’s Helpers, Drillers, Skidder Operators, Mechanics, Geotechnicians, etc...

Possible Job Requirements:

- Physically Fit
- Ability to use or learn to use various equipment
- Operate and maintain snowmobiles, ATV, generators etc...mechanically inclined
- Possess a drivers license
- Work in remote conditions
- Have navigational skills
- Training as required by AREVA and the contractor



AREVA Resources Canada Inc. – 2011 Athabasca Basin Projects

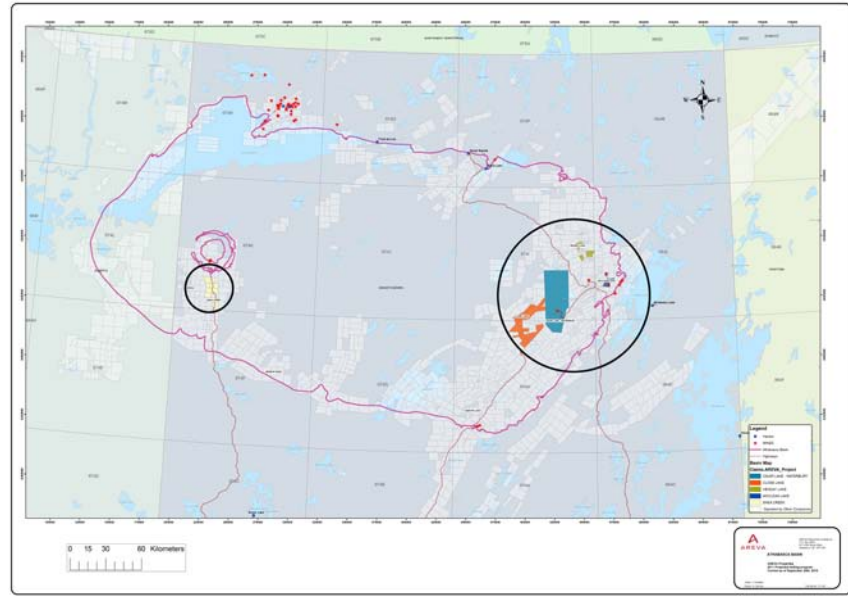
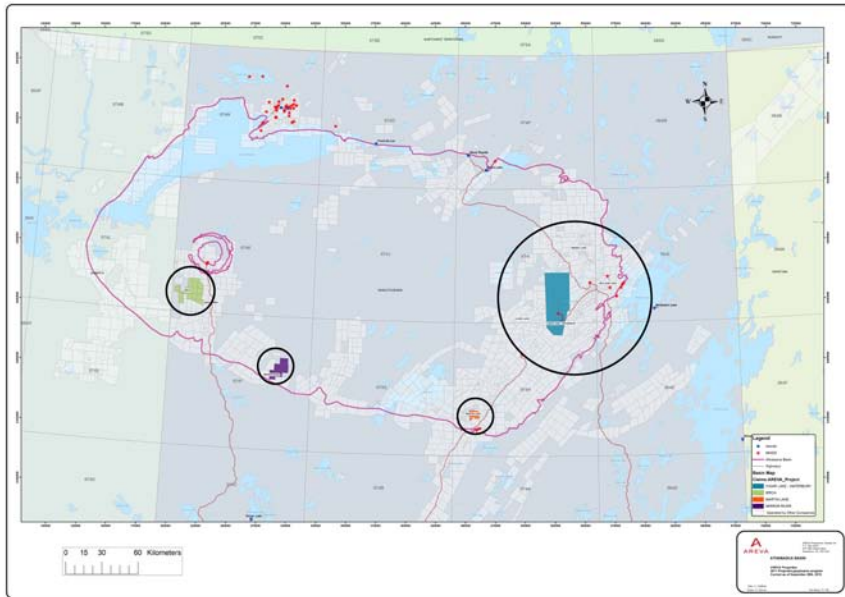


POTENTIAL SUPPLY & SERVICE OPPORTUNITIES TO EXPLORATION COMPANIES & EXPLORATION CONTRACTORS



- Fuel supply and delivery
- Core Boxes, Run Markers, Grid Pickets, Core Racks, Lumber
- Trail development, snow removal
- Ice flooding
- Supply & install clear span bridges
- Equipment Rentals
- Camp construction, camp rentals, catering
- Cooks, camp person
- Expediting
- Casual labor

AREVA Resources Canada Inc. – 2011 Athabasca Basin Projects



AREVA Contacts: Trevor Cooney, Buyer – Saskatoon Office (306) 343-4688

Glen Lafleur, Northern Community Relations Advisor- La Ronge Office (306) 425-6880

Kelly Sikorski, Geologist, Contract & Permit Specialist – Saskatoon Office (306) 343-4622

www.avevaresources.ca



THANK YOU