



HATHOR
EXPLORATION LIMITED

2010 and Winter 2011 Exploration

Talk Overview

- Introduction of Hathor Exploration Limited
- 2010 Exploration Expenditures and
Exploration Plans for 2011 by Property
- Contractor Requirements for Winter 2011



PART 1: Hathor Exploration Limited –Who?

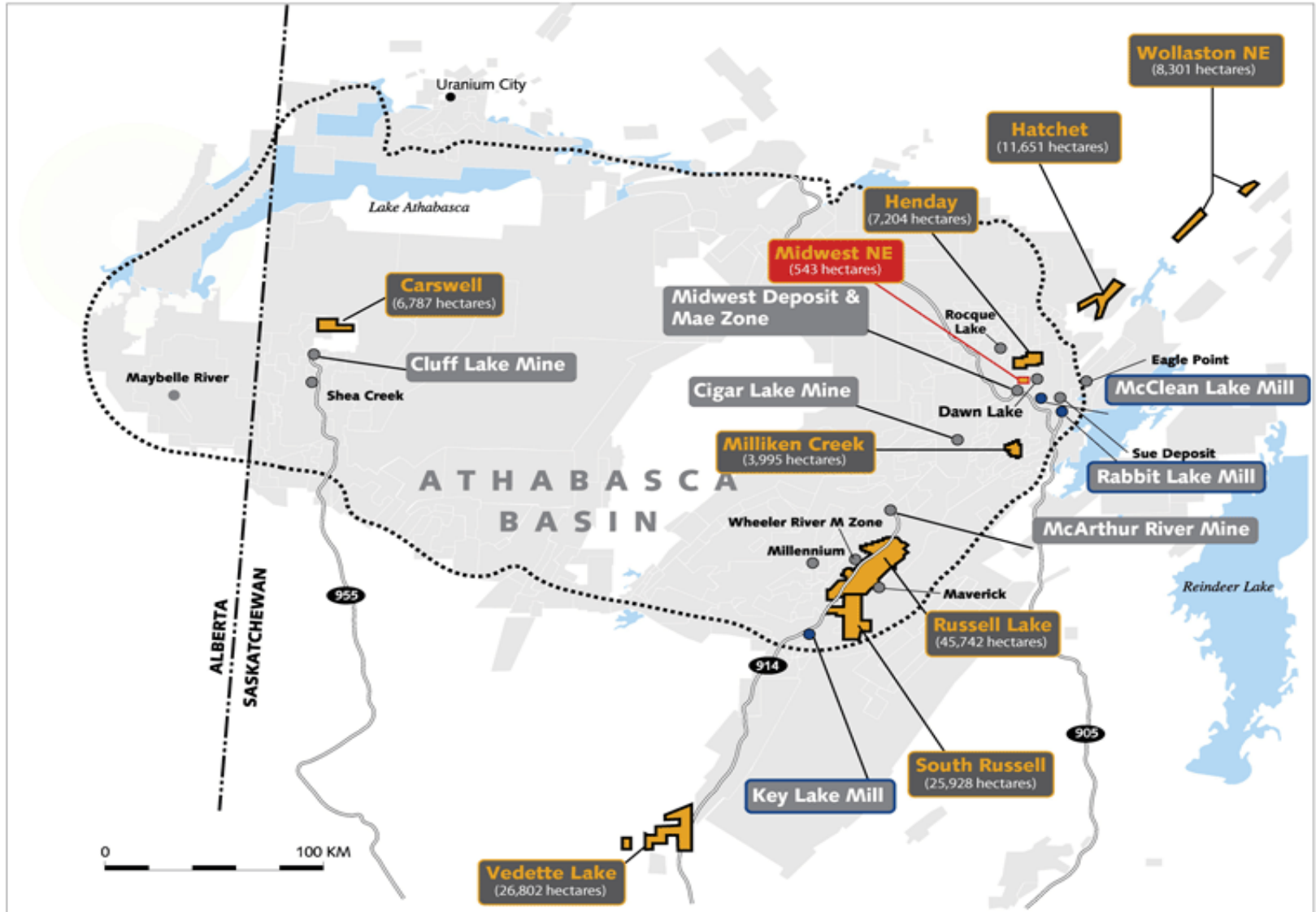
Hathor is...

- Aggressive junior uranium exploration company focused in the Athabasca Basin today
- Responsible for one of the most significant uranium discoveries in the past 20 years
- Committed to fostering long term relationships with our Northern communities
- Office Location
 - Head Office in Vancouver, BC
 - Exploration Office in Saskatoon, SK
 - Investor Relations in Calgary, SK



HATHOR
EXPLORATION LIMITED

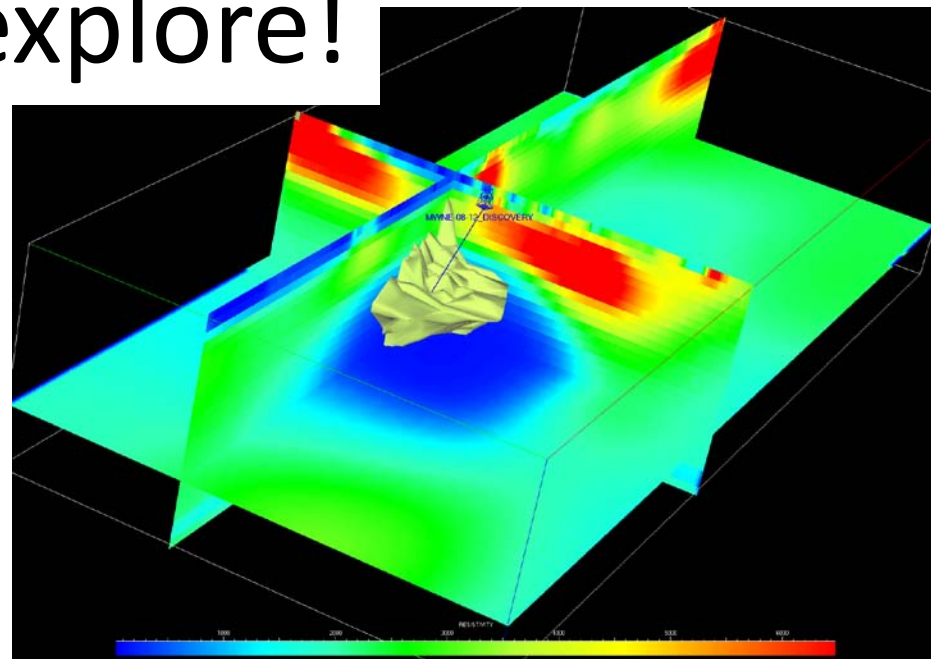
Hathor's Properties In Northern Saskatchewan



What does Hathor do?



We explore!



2010 Expenditures and Exploration Plans for Winter 2011



HATHOR
EXPLORATION LIMITED

2010 Expenditures

Uranium City

Lake Athabasca

Reindeer Lake

914

905

ALBERT
SASKATCHE

0 100 KM



HATHOR
EXPLORATION LIMITED

Midwest NE

90% Hathor, 10% Terra Ventures (carried)

2010 Expenditures: \$11.4 M

- Drilling: 4 Rigs Winter, 3 Rigs Summer (ca. 46,000 m)
- Geophysics: Entire-property ground resistivity
 - Lidar Data

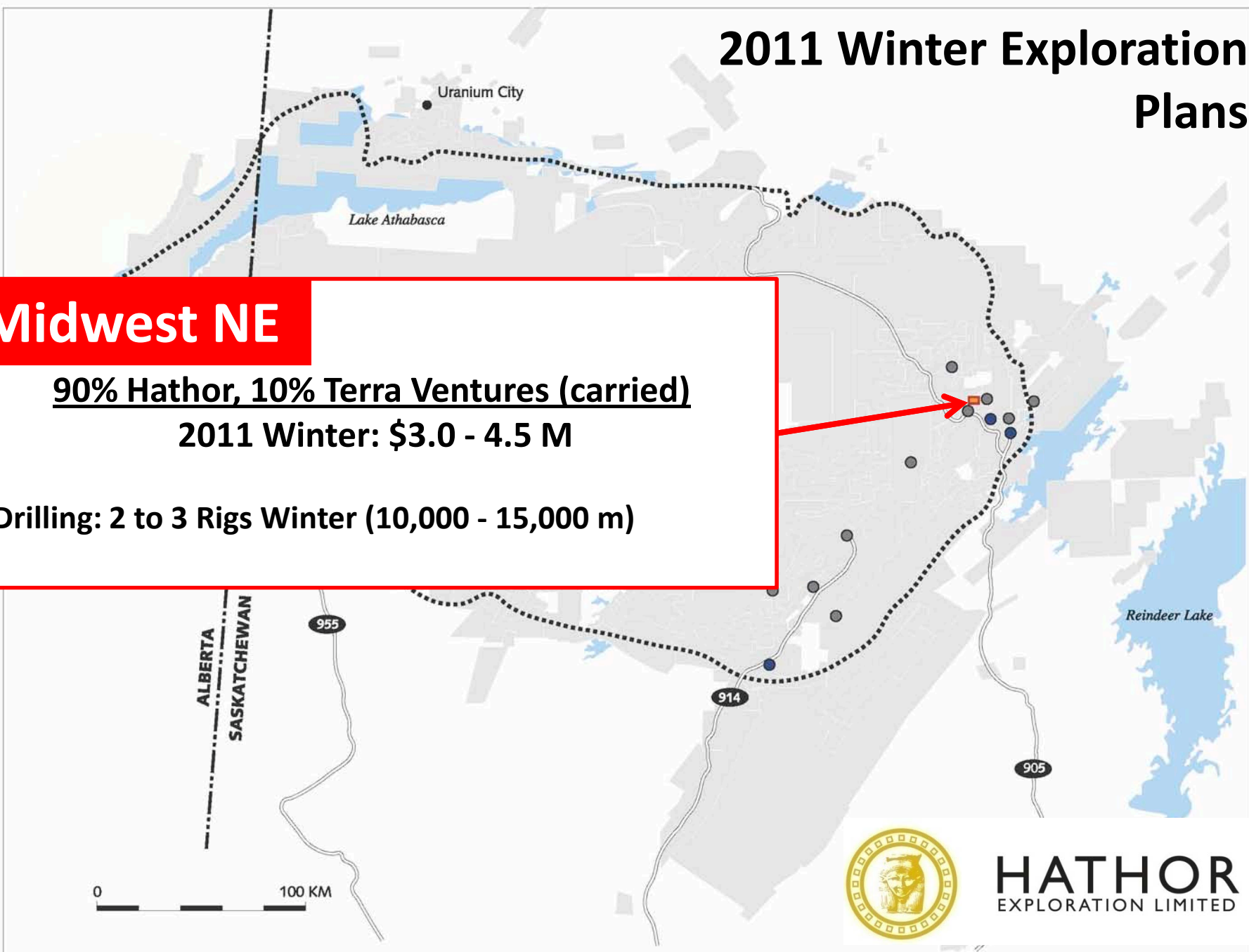
2011 Winter Exploration Plans

Midwest NE

90% Hathor, 10% Terra Ventures (carried)

2011 Winter: \$3.0 - 4.5 M

•Drilling: 2 to 3 Rigs Winter (10,000 - 15,000 m)



HATHOR
EXPLORATION LIMITED

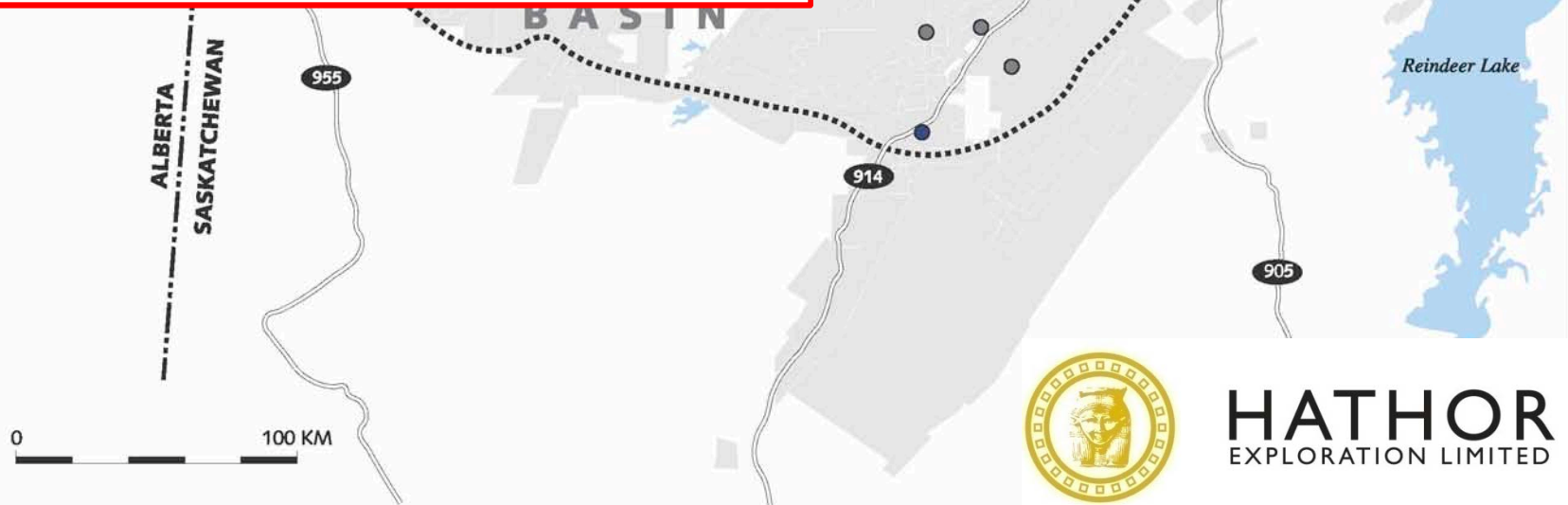
2010 Expenditures

Henday Lake

JV with Forum Uranium (operators)

2010 Expenditures \$1.6 M

- Drilling: 1 Rig (ca. 4000 m)
- Soil sampling program



2011 Winter Exploration Plans

Henday Lake

JV with Forum Uranium (operators)

2011 Winter \$1.2 M

- Drilling: 1 Rig (ca. 3500 m)

0 100 KM

ALBERTA
SASKATCHEWAN

955

914

905

BASIN

Uranium City

Reindeer Lake



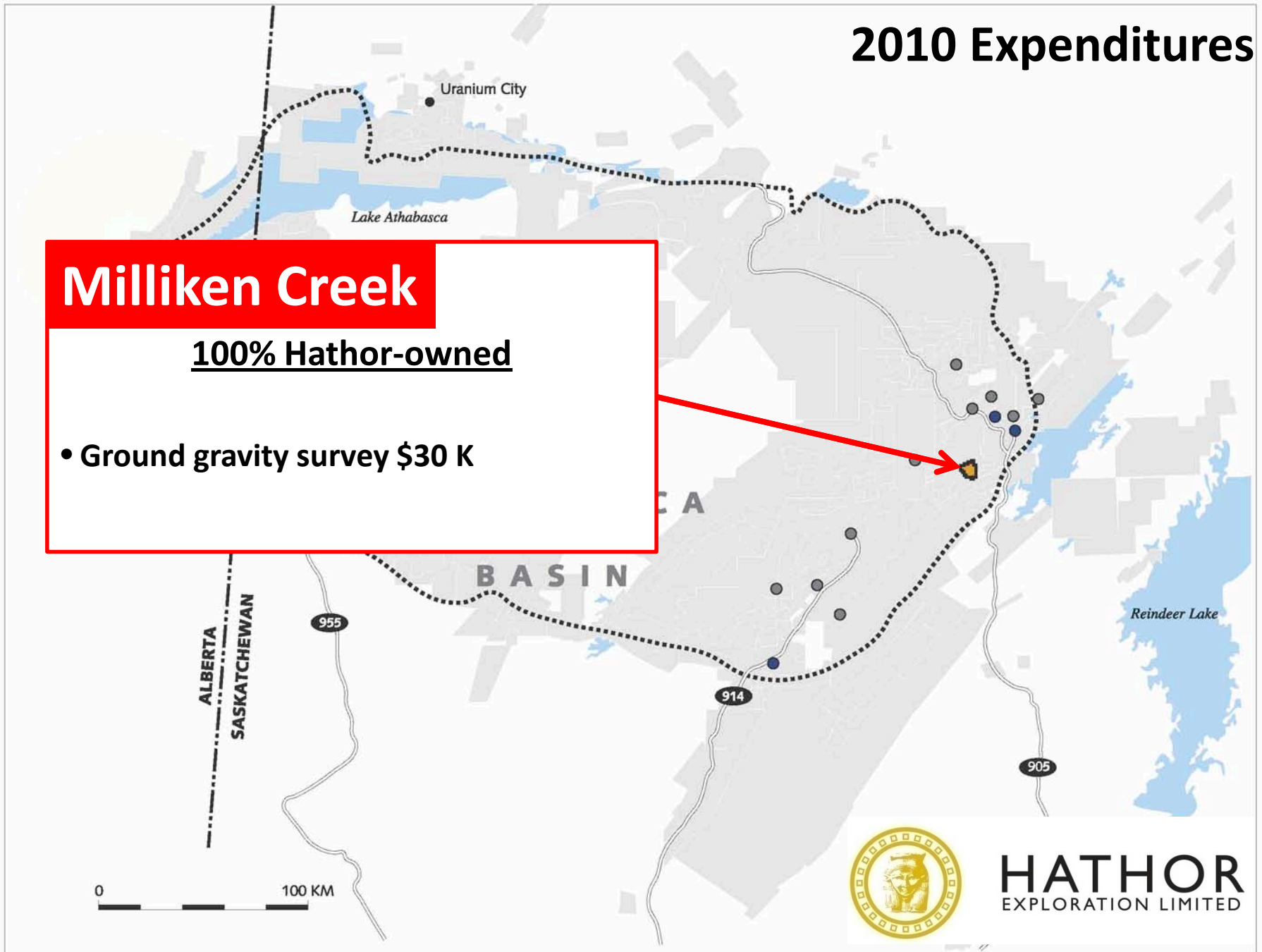
HATHOR
EXPLORATION LIMITED

2010 Expenditures

Milliken Creek

100% Hathor-owned

- Ground gravity survey \$30 K



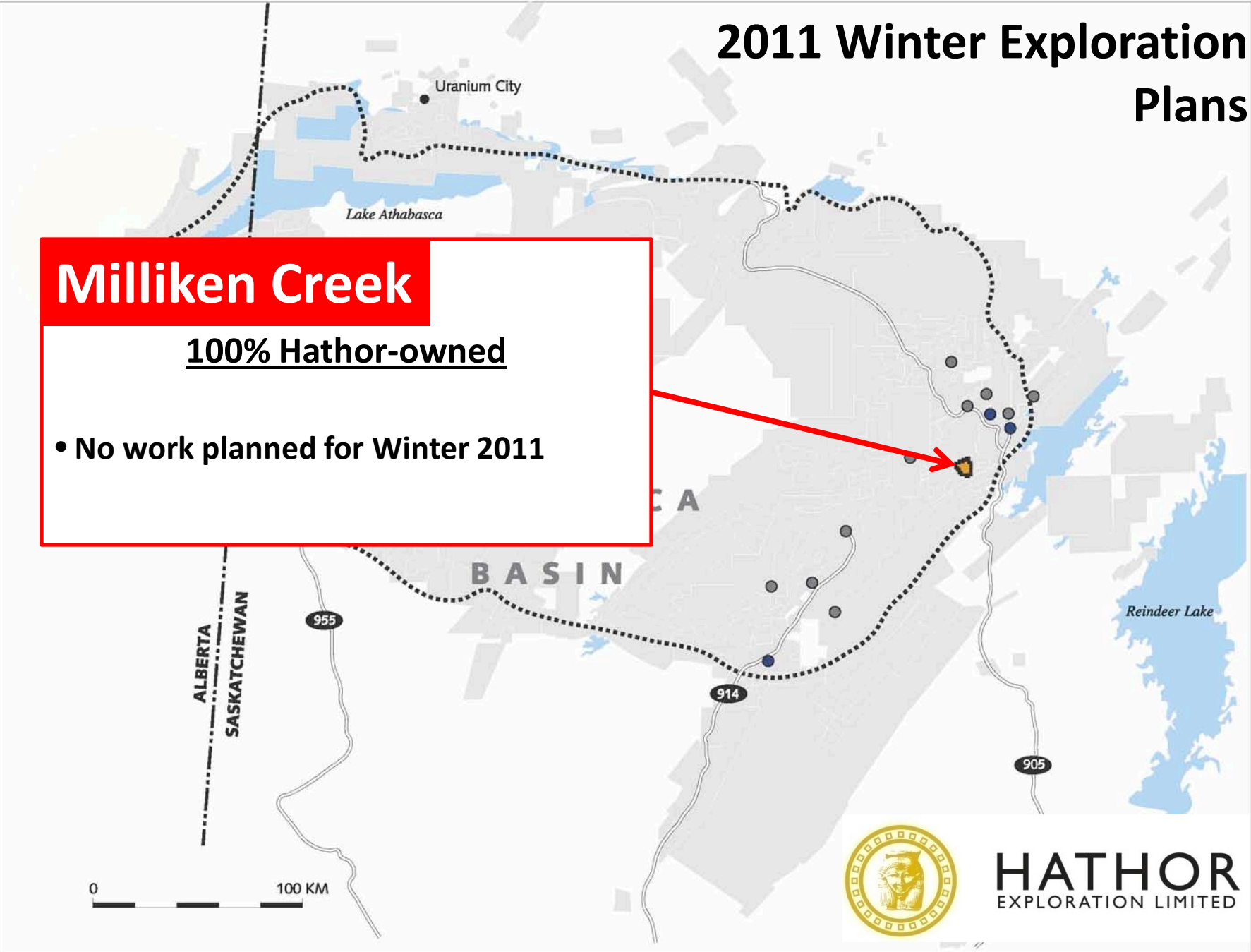
HATHOR
EXPLORATION LIMITED

2011 Winter Exploration Plans

Milliken Creek

100% Hathor-owned

- No work planned for Winter 2011



HATHOR
EXPLORATION LIMITED

2010 Expenditures

Russell Lake

90 - 100% Hathor, 0 - 10% Terra Ventures

(depending on claim)

2010 Expenditures \$2.5 M

- Drilling: 1 Rig (ca. 3500 m)
- Geophysics: AMT survey
 - Lidar Survey
- Camp setup

0 100 KM



HATHOR
EXPLORATION LIMITED

2011 Winter Exploration Plans

Russell Lake

90 – 100% Hathor, 0-10% Terra Ventures

(depending on claim)

2011 Winter \$1.8 M

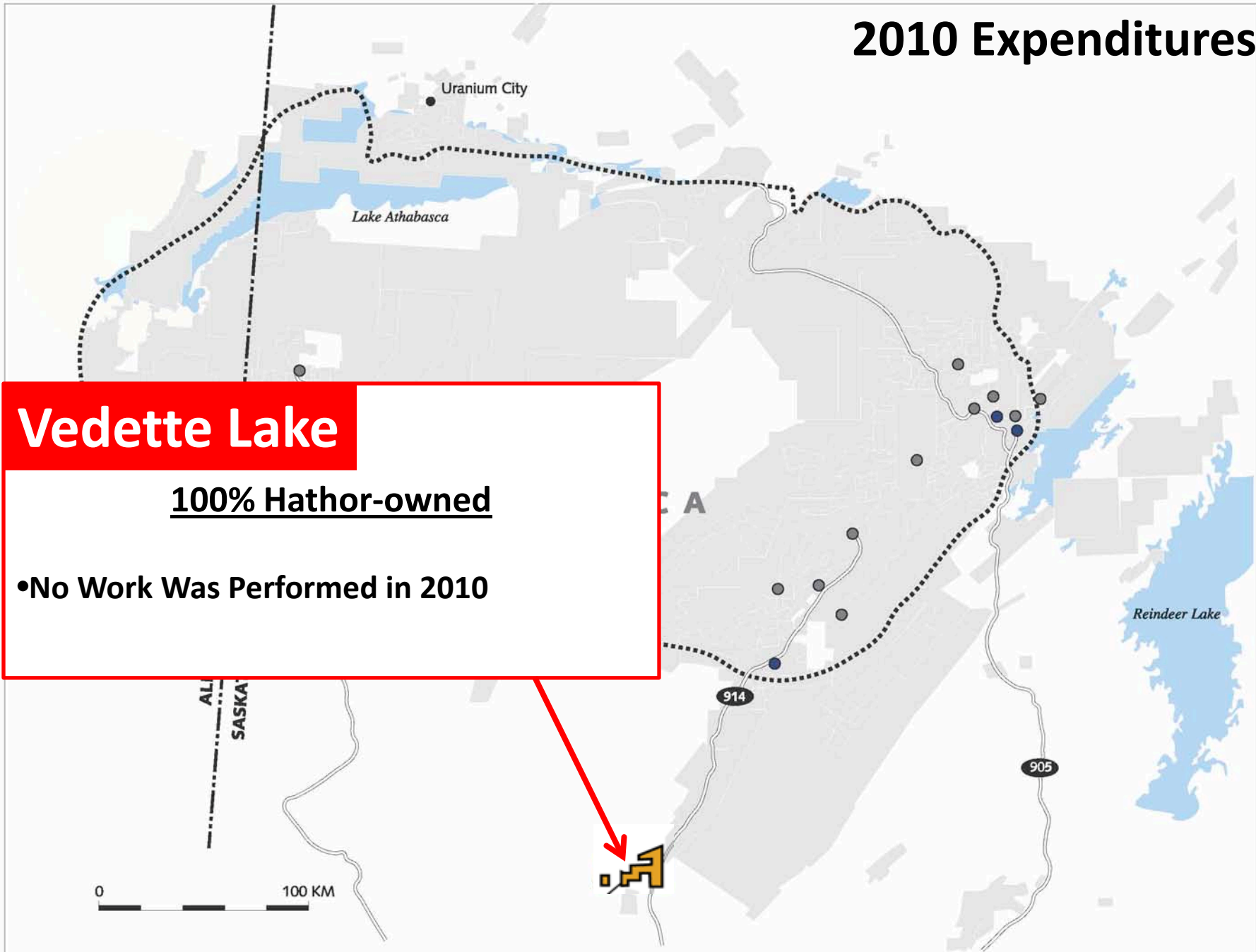
- Drilling: 1 Rig (ca. 5000 m)
- Geophysics: AMT survey
 - Gravity and resistivity surveys

0 100 KM



HATHOR
EXPLORATION LIMITED

2010 Expenditures



Vedette Lake

100% Hathor-owned

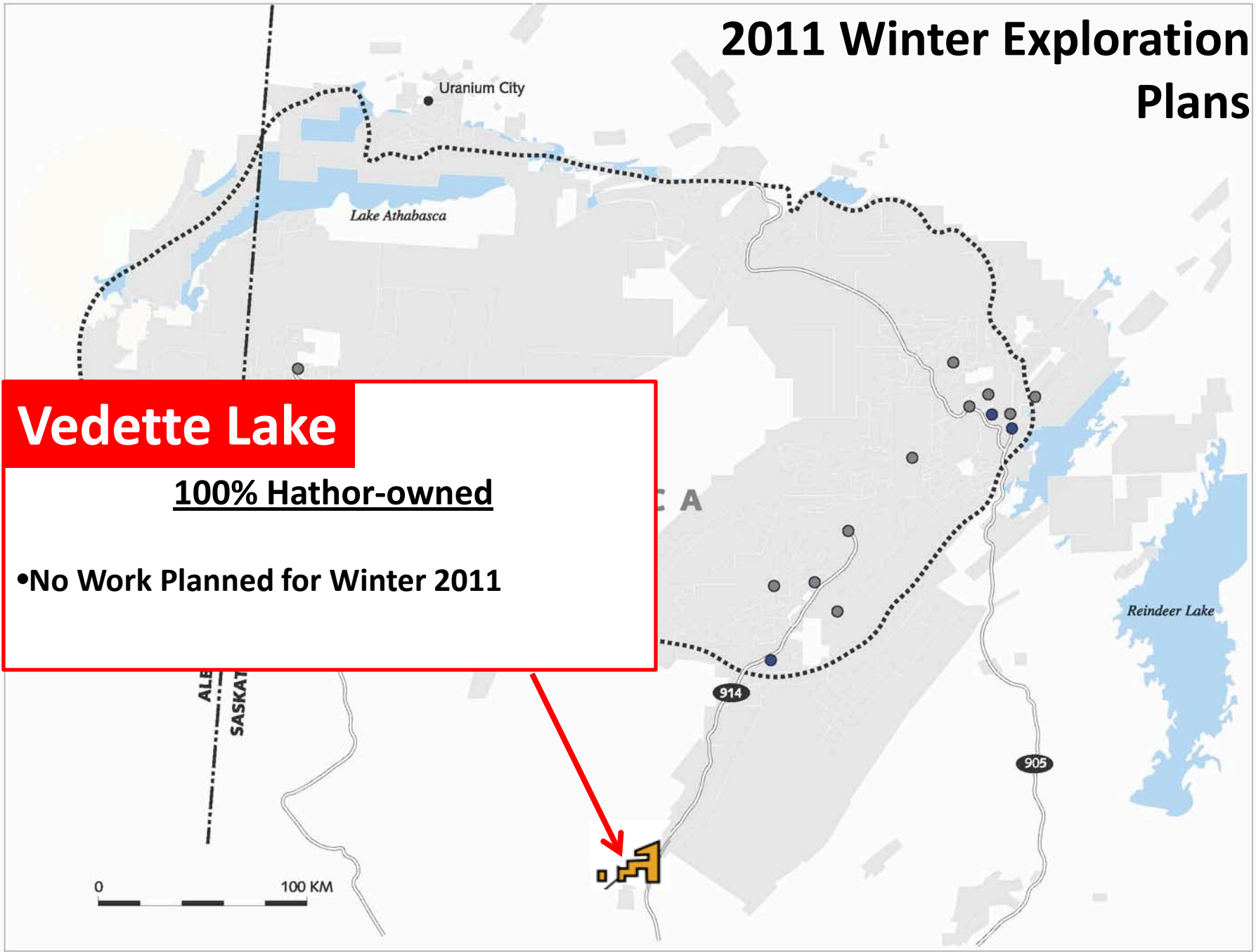
•No Work Was Performed in 2010

2011 Winter Exploration Plans

Vedette Lake

100% Hathor-owned

•No Work Planned for Winter 2011



Contractor Requirements for Winter 2011

- Midwest NE
 - 1 - 2 geo-techs (tech logging, splitting core, etc.)
 - Possibly 2 - 3 more geologists (if 3 drilling rigs)
- Russell Lake
 - Drilling Contractor for 5000 m program
 - Geophysical contractor and line-cutters
 - Possibly 1 geo-tech (tech logging, probing, etc.)



Visit us anytime – you'll find us in the Basin!



HATHOR
EXPLORATION LIMITED