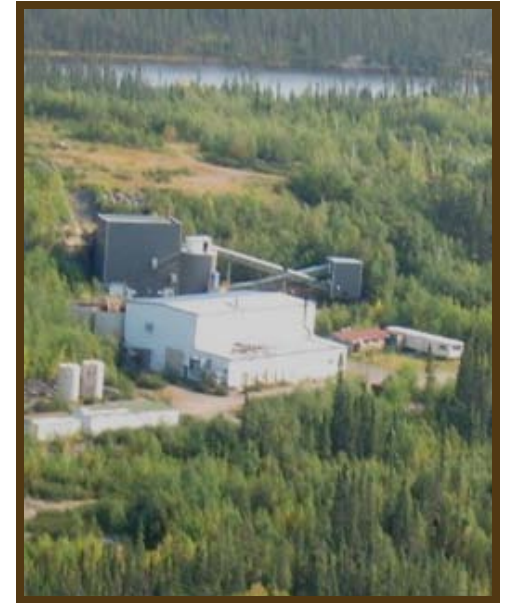


La Ronge Gold Project

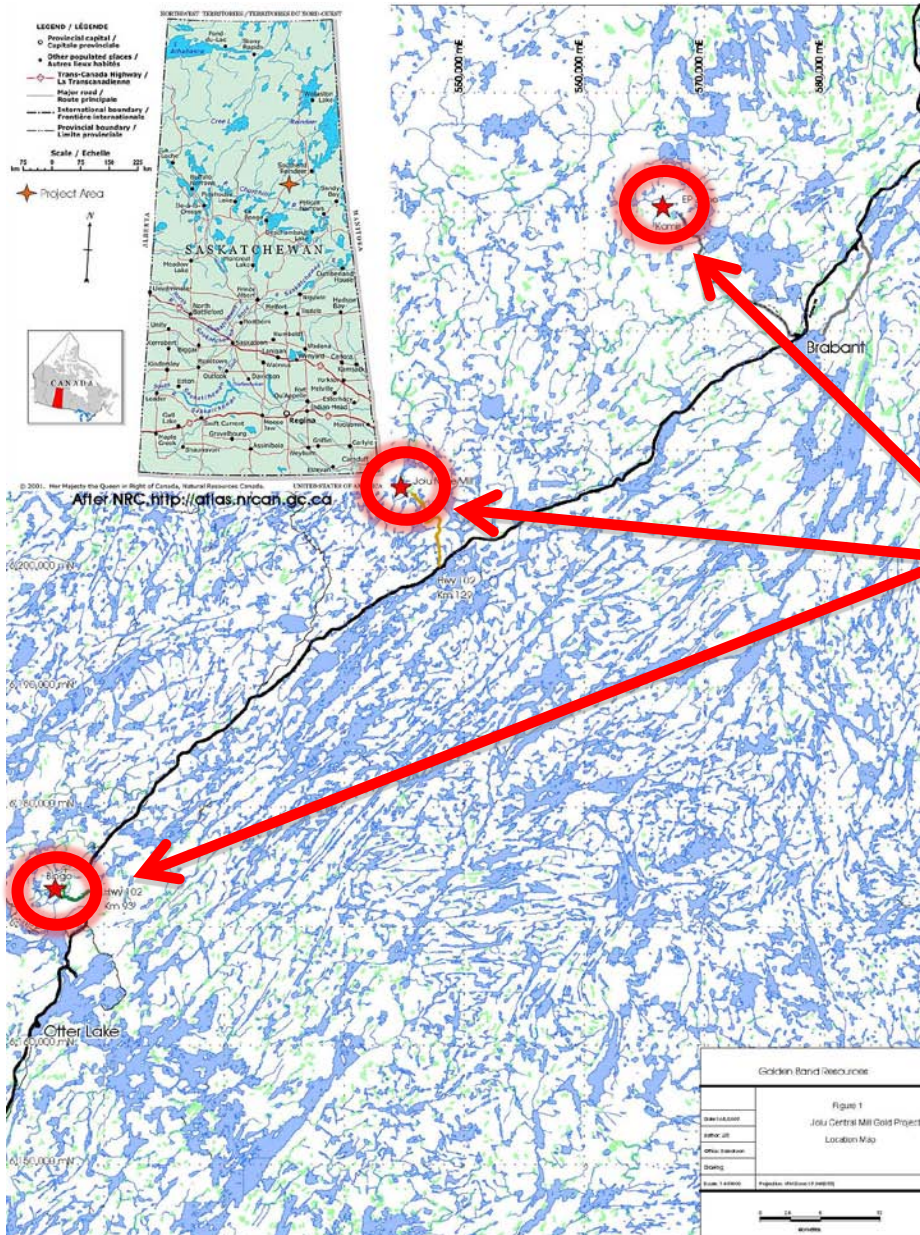
2010 Plans and Opportunities



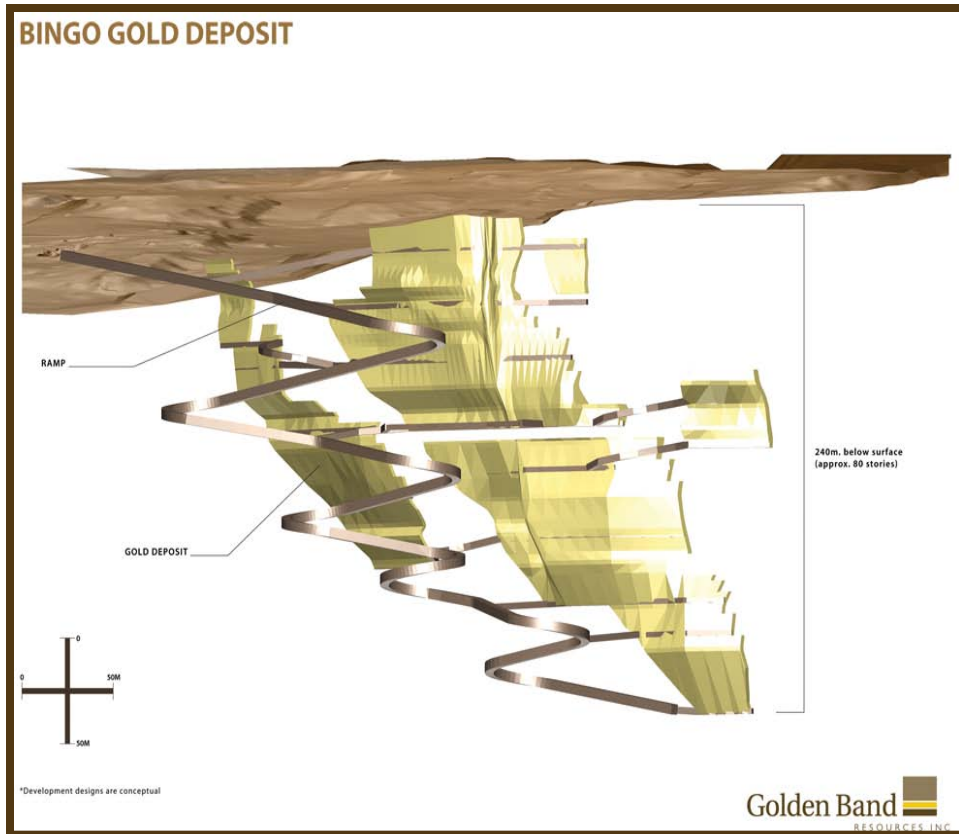
The La Ronge Gold Project

2010 Plans

- Bingo deposit
- Jolu Mill & TMF
- EP deposit
- Komis deposit



The Bingo Deposit



- Underground work restarted in Feb. 2010.
- Initial plan to complete 750m of exploration development. on 2 levels.
- Pre-production development phase to include open pit, UG development of infrastructure.
- UG Production phase to commence in September 2010.
- Kitsaki Procon JV to provide mining and ore trucking services.

The Jolu Mill

- Mill refurbishment scheduled to commence by end of April, 2010.
- SaskPower to provide grid power supply from Lindsay Lake sub-station. Brushcutting now underway.
- Other construction activity includes assay lab and office facility, tailings facility, roads, and 49 man camp.
- Refurbishment will require 4 months and a further month of commissioning.
- Mill operation at 400 tpd by end of September using Kitsaki Procon JV operators.

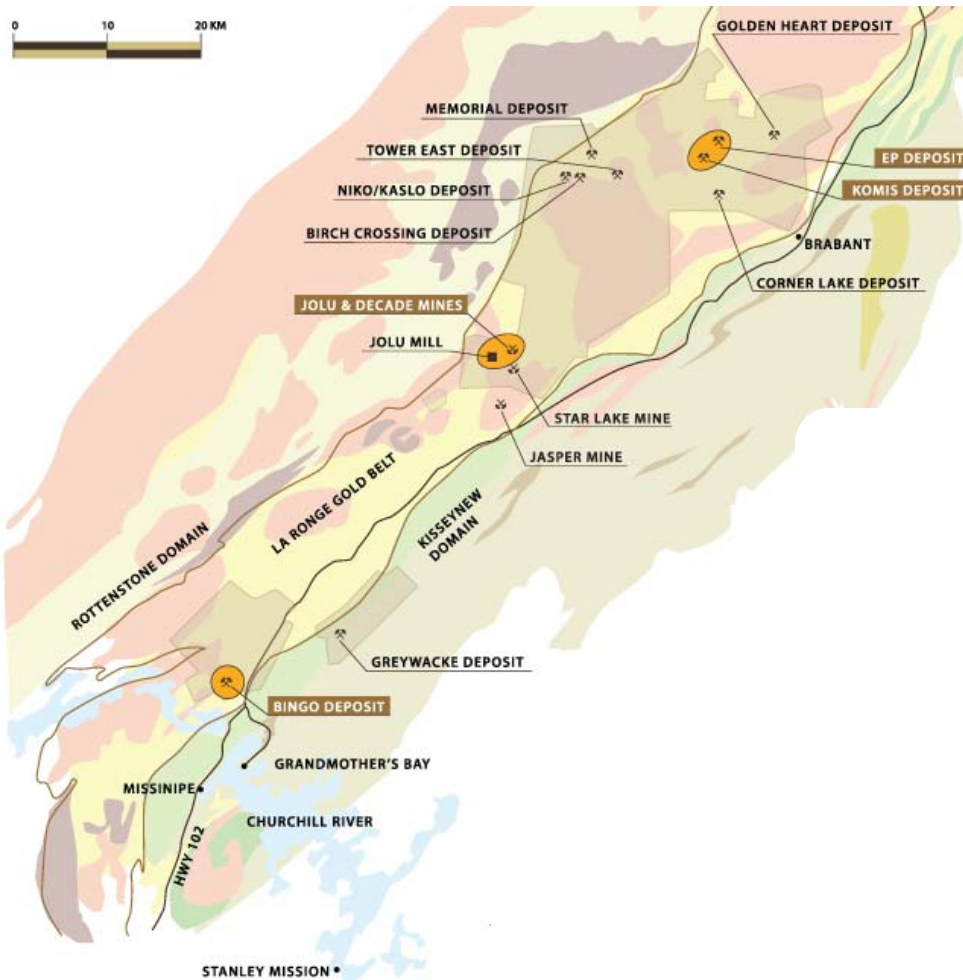


Jolu TMF



- Complete Federal EA Process & Schedule 2 designation and commission in summer of 2011.
- Construct a relatively small (10.5 ha), above ground tailings management facility.
- Operate for approximately 1 year and allows the project to proceed without use of the Mallard TMF.
- Expand capacity of the Mallard TMF by summer of 2011

Komis & EP Gold Deposits



- EP will be mined as a small open pit once gold production is underway.
- Komis to be developed as an UG operation after completion of an initial exploration program
- Dewater workings and assess resource in 2010
- Develop for production for start-up in 2011
- Jolu mill to ramp up to 700 tpd

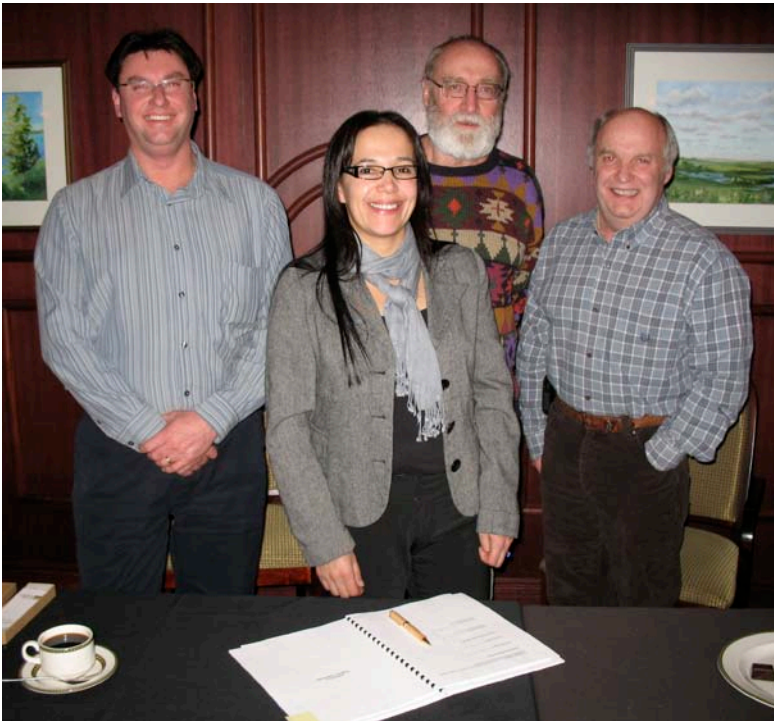
La Ronge Gold Project

Economic Benefits

- Golden Band expects that the La Ronge Gold Project will create up to 100 full time jobs with an estimated payroll of between \$25M and \$30M.
- It will also require expenditures of up to \$150M to purchase goods and services.
- It is Golden Band's intent to secure a significant portion of the workforce, goods and services from Northern Saskatchewan.

La Ronge Gold Project

Ongoing Relationship with LLRIB



- Golden Band Resources Inc. is committed to providing the maximum amount of social and economic benefit to local communities during the development and operations of the La Ronge Gold Project.
- An important step in this commitment was the signing of a General Services Agreement (GSA) with Kitsaki/Procon Joint Venture on February 11, 2010.

La Ronge Gold Project

GSA with Kitsaki / Procon

- The GSA confirms business opportunities from the project, including: mine development and production mining, mill refurbishment and operation, surface construction, ore haulage, and accommodation services.
- In addition, the agreement asserts the commitments that both organizations have made to ensure environmentally responsible mineral development, promotion of a safe and healthy worksite, and hiring and training for members of the Lac La Ronge Indian Band.
- The Kitsaki / Procon Joint Venture consists of Kitsaki Mining Limited Partnership, which is part of the for-profit economic development agency of the Lac La Ronge Indian Band, and Procon Mining Partnership.



100 - 701 Cynthia Street, Saskatoon, SK. Canada S7L 6B7

P.O. Box 540 La Ronge, SK S0J 1L0

www.goldenbandresources.com

TSXV: GBN