



HATHOR
EXPLORATION LIMITED

Winter 2009 / 2010 Exploration

PART 1: Hathor Exploration Limited – who?

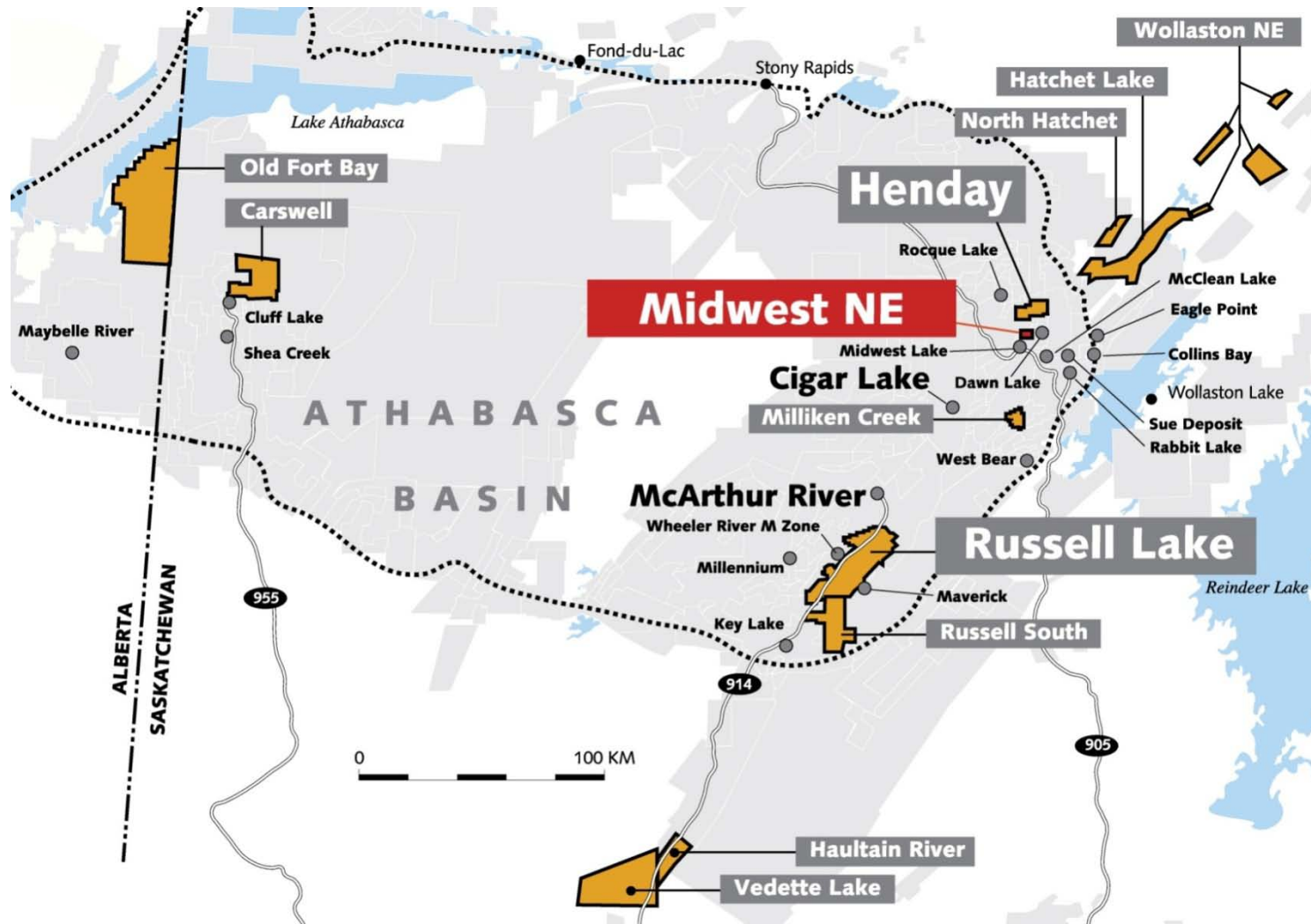
Hathor is...

- Aggressive junior uranium exploration company focused in the Athabasca Basin today
- Responsible for one of the most significant uranium discoveries in the past 20 years
- Committed to fostering long term relationships with our Northern community
- Office Location
 - Head Office in Vancouver, BC.
 - Exploration Office in Saskatoon, SK
 - Investor Relations in Calgary, SK



HATHOR
EXPLORATION LIMITED

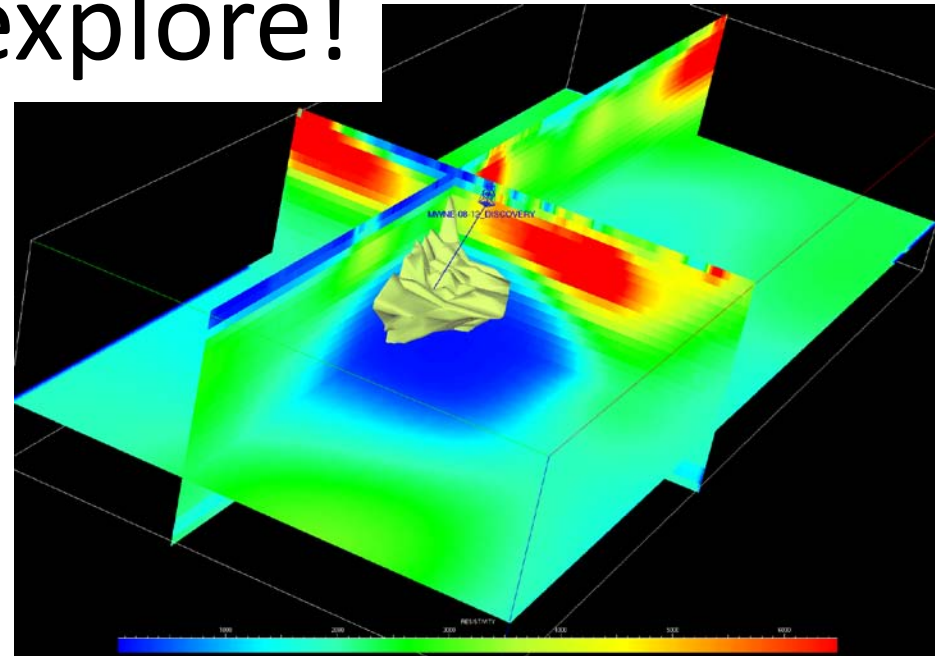
Hathor's Properties In Northern Saskatchewan



What does Hathor do?



We explore!



PART 2: Hathor's & Saskatchewan Companies

ATHABASCA BASIN DEVELOPMENT



ABDLP
LIMITED PARTNERSHIP

TEAM
DRILLING^{LP}



POINTS NORTH FREIGHT
FORWARDING INC.

Pronto *airways!*



Tigerdale Enterprises Ltd.
Camps and Core Boxes

Core Boxes, Racks, Shelters & Logging Shacks



smart science solutions



HATHOR
EXPLORATION LIMITED



“World-class drilling company with roots firmly planted in the local community”

Hathor were the first company to use TEAM

Hathor continues to be a major client of TEAM

2008 Expenditures: Over \$1.1 million

2009 Expenditures: Over **\$8.2 million**



HATHOR
EXPLORATION LIMITED





- Provides vital infrastructure facilities for exploration
- Provides revenue to northern communities
- Reduces environmental impact on exploration

- Hathor has a large presence at Points for approx 7 months per year

Services rendered:

- Fueling - diesel & gas
- Fueling – jet fuel
- Propane
- Accommodation and meals

2008 Expenditures: \$838,000

2009 Expenditures: **Over \$1.6 million**



HATHOR
EXPLORATION LIMITED

Hiring Saskatchewan Expertise cont'd

J.P Enterprises

2008 Expenditures: \$18,200

2009 Expenditures: **\$49,900***

Patterson Geophysical Inc.

2008 Expenditures: \$465,300

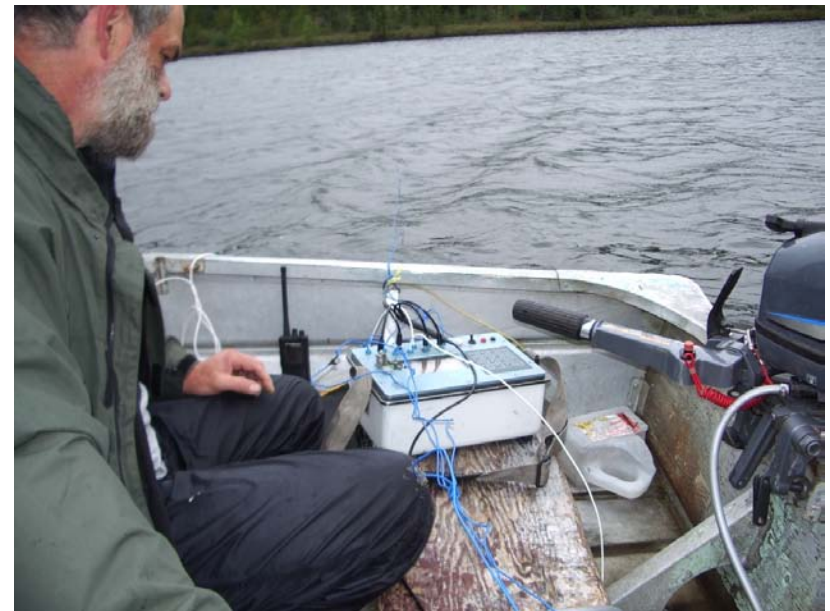
2009 Expenditures: **\$184,000***

Tigerdale Enterprises Ltd.

2008 Expenditures: \$120,000

2009 Expenditures: **\$222,500***

* Year to date



HATH
EXPLORATION LTD.



Local airline services jointly serving the exploration and northern communities

2008 Expenditures: \$64,000

2009 Expenditures: **\$105,000**



HATHOR
EXPLORATION LIMITED

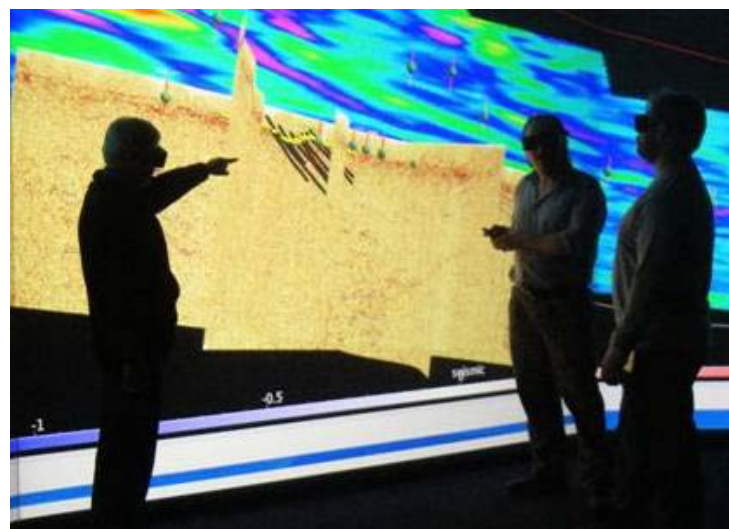


Saskatoon Research Centre

Hathor's commitment to employing the most advanced exploration technologies has proven positive for both Hathor and Saskatchewan.

2008 Expenditures: \$534,000

2009 Expenditures: **\$887,000**



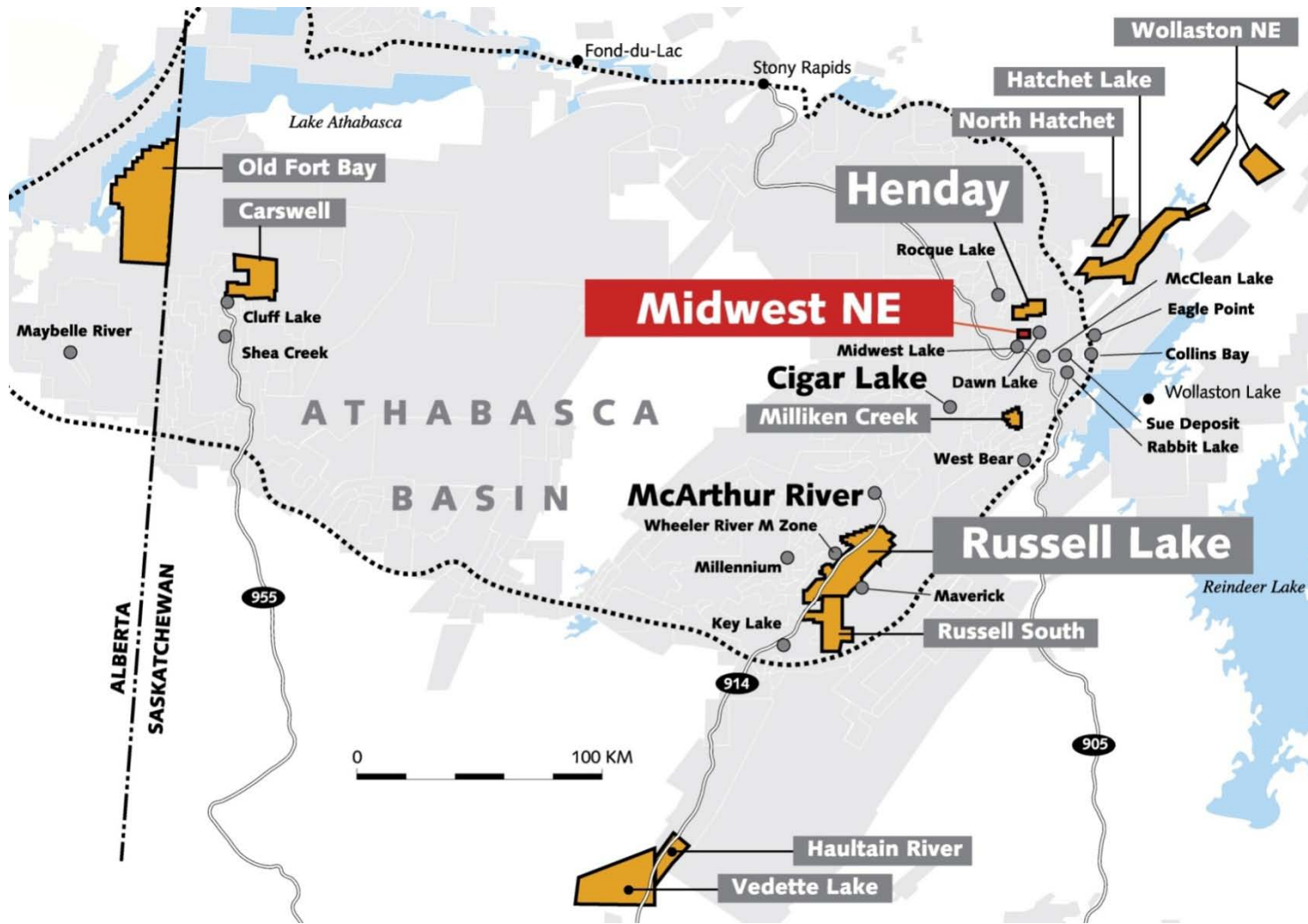
HATHOR
EXPLORATION LIMITED

PART 3: Plans for 2009



HATHOR
EXPLORATION LIMITED

Hathor's Properties In Northern Saskatchewan



Winter 2010 Plans

Midwest NE

90% Hathor, 10% Terra Ventures (carried)

- Drilling : 4 Rigs, approx 20,000m
- Geophysics: ground resistivity
- Line Cutting: approx. 6 km

0 100 KM



HATHOR
EXPLORATION LIMITED

Winter 2010 Plans

Henday Lake

JV with Forum Uranium (operators)

- Camp: Establishing drill camp
- Drilling : 1 Rig, approx 5000m

ATHABASCA
BASIN

ALBERTA
SASKATCHEWAN

955

914

905

Reindeer Lake

0 100 KM



HATHOR
EXPLORATION LIMITED

Winter 2010 Plans

Milliken Creek

100% Hathor owned

- Geophysics: ground resistivity
- Line cutting: re-establishing historic grid & new line cutting

Uranium City

Lake Athabasca

Reindeer Lake

ALBERTA
SASKATCHEWA

955

914

905

0 100 KM



HATHOR
EXPLORATION LIMITED

Winter 2010 Plans

South Russell

90 – 100% Hathor, 0-10% Terra Venturs
(depending on claim)

- Geophysics: ground resistivity and gravity
- Line Cutting: new grid creation

0 100 KM

ALBERTA
SASKATCHEW

Uranium City

Lake Athabasca

Reindeer Lake

914

905



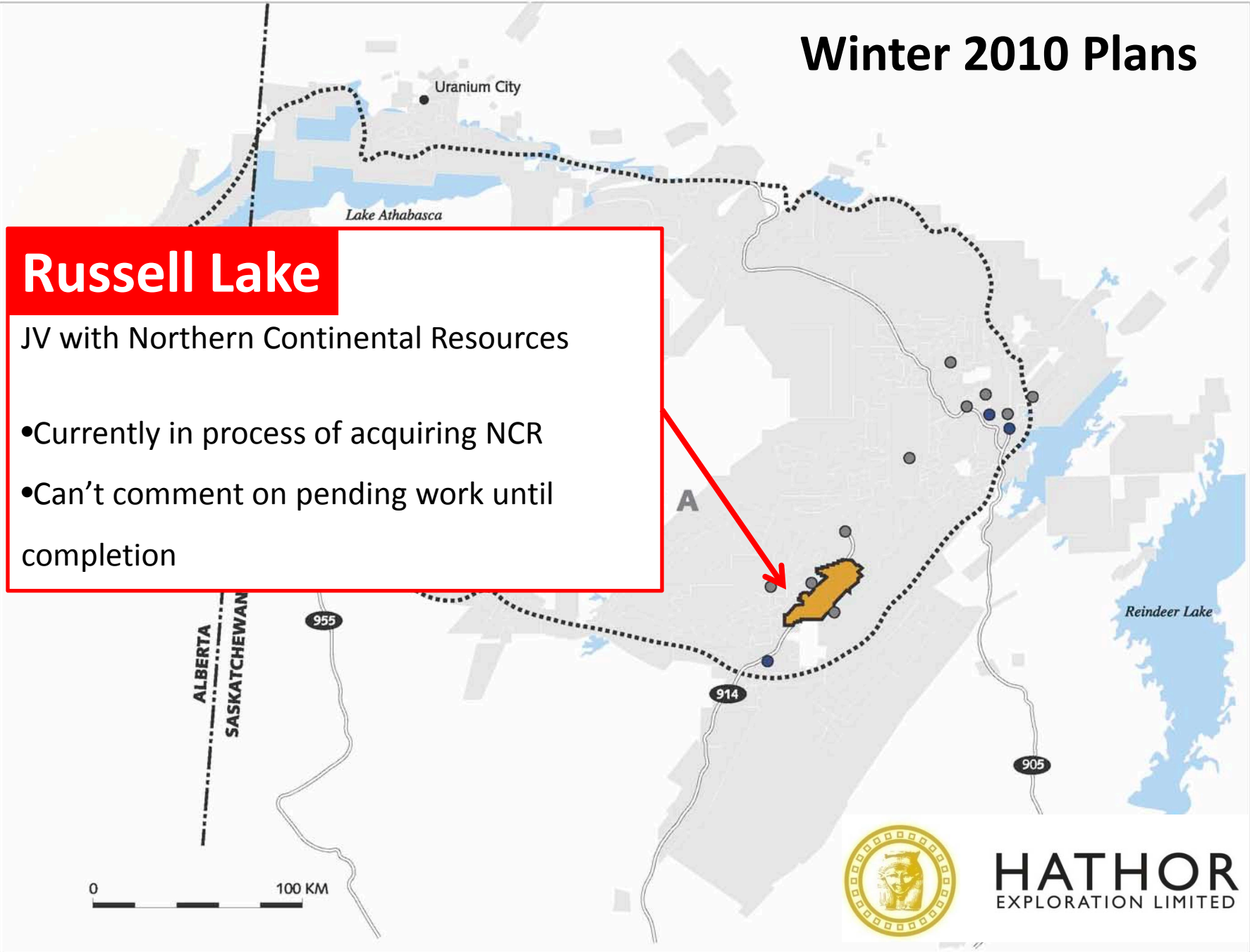
HATHOR
EXPLORATION LIMITED

Winter 2010 Plans

Russell Lake

JV with Northern Continental Resources

- Currently in process of acquiring NCR
- Can't comment on pending work until completion

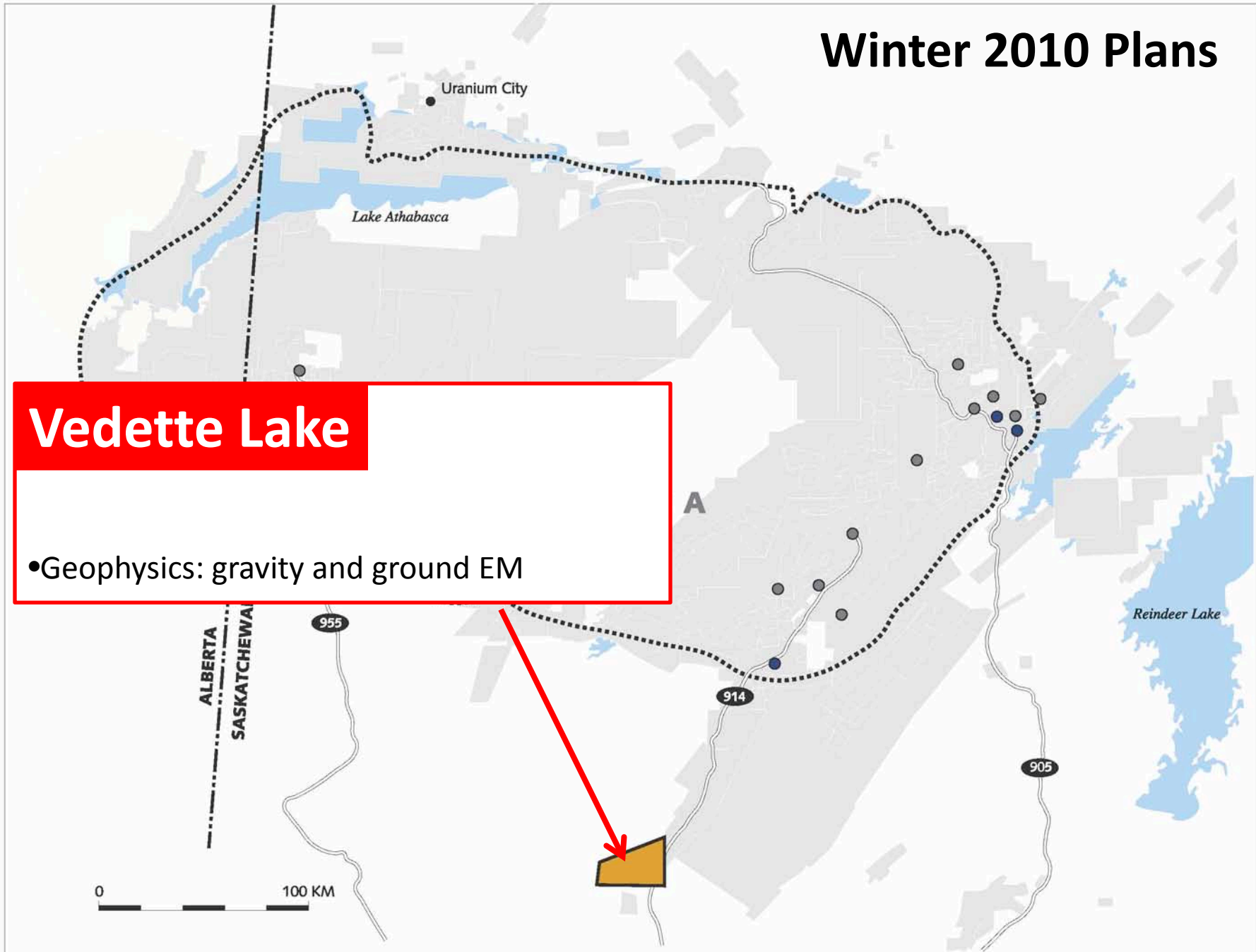


HATHOR
EXPLORATION LIMITED

Winter 2010 Plans

Vedette Lake

- Geophysics: gravity and ground EM



Visit us anytime – you'll find us in the Basin



HATHOR
EXPLORATION LIMITED